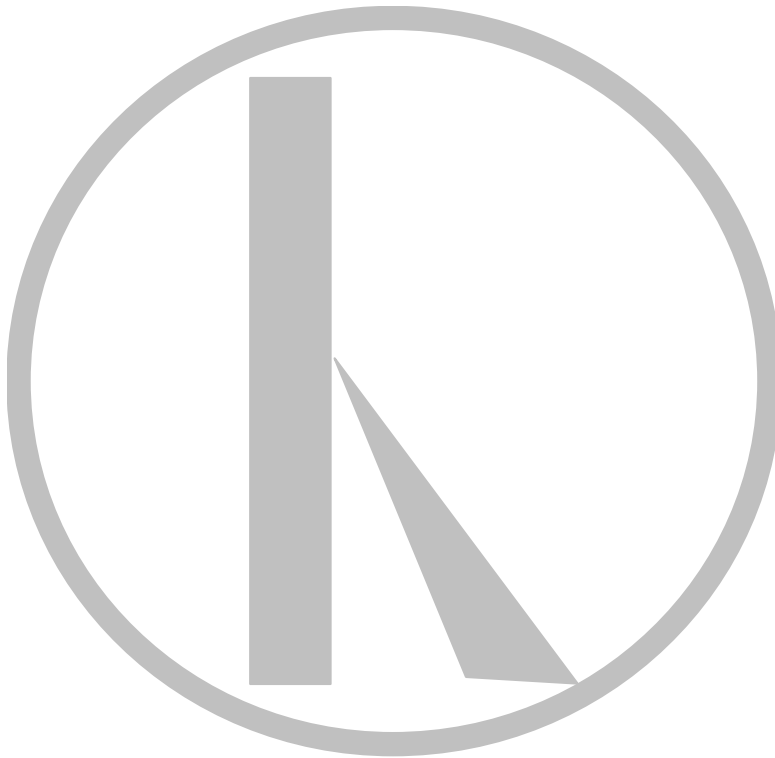

Histogram

www.histonsw.org.au

ISSUE 2
July 2015



Newsletter of the Histotechnology Society of NSW

Contents

Committee Members.....	2
Editorial.....	3
Chairman's Report.....	4
Histogram Advertising Charges.....	5
Upcoming Events 2015.....	6
Body Farm Talk.....	9
Summary Of The 7th National Histotechnology Conference.....	11
Answers From Issue 1, 2015.....	13
Abstracts From The 7th National Histology Conference 2015	14
Membership Renewal Notice 2015-2016	21
Student Membership Application Form 2015 – 2016.....	22

Committee Members

Chairman	Trevor Hinwood	tdhinwood@hotmail.com	Product Specialist
Secretary	Bharathi Cheerale	bcheerala@dhm.com.au	In charge IHC Lab. DHM
Assistant Secretary	Katherine Wells		Histology Lab, DHM
Treasurer	Fred Reader	nordica15@bigpond.com	
Editor	Linda Prasad	linda.prasad@health.nsw.gov.au	Scientist, Histopathology CHW
Assistant Editor	Tony Henwood	tony.henwood@health.nsw.gov.au	Histopathology Lab Manager CHW
Website Coordinator	Margaret James	megajam@optusnet.com.au	NSW & ACT Account Manager
Trade Rep	Robyn White	rob@arthurbailey.com.au	
	Mark Mullen	mark.mullin@leicabiosystems.com	
	Natalie Fennel	Natalie.Fennel@dako.com	
Country Rep	Penelope Whippy	pwhippy@bigpond.net.au	Prof Assoc , Lecturer Anatomical Pathology, CIT & UC
	Anne Prins	anne.prins@anu.edu.au	John Curtin School of Medical Research, ANU
Student Rep	Aldo Quintanilla Jonathan Myer Momoko Sakaki Christina Antonio	aldo.perdomo@hotmail.com jmayer19@hotmail.com momoko.sakaki@health.nsw.gov.au cristina_b_antonio@yahoo.com.au	Granville Tafe Sydney Uni Granville Tafe Ultimo Tafe
Committee	Bill Sinai	snai_family3@bigpond.com	Life Member
	Dianne Reader	dreader@nssccahs.health.nsw.gov.au	Histology, RNSH
	Jacky Mayfield	jacky.mayfield@health.nsw.gov.au	Histology, CHW
	Grant Taggart	gtaggart@dhm.com.au	Department Manager Histology DHM
	Gillian Evans	sgbevans@bigpond.com	
	Leah Simmons	leah.simmons5@tafensw.edu.au	Histology teacher, Granville TAFE

Editorial

International Pathology Day will take place on 18 November 2015. International Pathology Day is an opportunity to celebrate the vital work of Pathologists, Scientific and Technical Staff to demonstrate to the public the important role of pathology in their lives.

Pathologists, laboratory scientists and technicians from all institutions and hospitals are encouraged to celebrate pathology day by generating greater awareness and dispelling the many myths around the specialty that saves lives. There are a variety of ways you could celebrate International Pathology Day. For a few ideas on how to celebrate look up “I Love Pathology provided by The Royal College of Pathologist” website.

I hope you all find reading the histogram to be enjoyable and educational, which is always my aim. The committee continues to work tirelessly to bring histotechnicians an educational experience, with some fun thrown in, to make it enjoyable. Please feel free to contact me with any feedback.

We have a Facebook page called ‘Histotechnology Society of NSW’. Please like and share this page to colleagues and friends. Check Facebook and the website regularly to keep up to date with all the educational programs and workshops for the rest of this year.

Happy reading ☺

Linda Prasad,
Histogram Editor
linda.prasad@health.nsw.gov.au

Chairman's Report

Dr Kendall Bailey's presentation on the "Body Farm" in the USA was again well received with some 120 people attending. Forensic Pathology is still generating a lot of interest, a very successful night. Anne and Penny's "Cut Up" workshops continue to be popular with the next workshops this year already booked out.

Work continues with the NSW TAFE on suggestions for improvements to course contents, workshops and our involvement in TAFE presentations/lectures. There is a lot we can do to improve outcomes for their students in these areas.

At our last committee meeting we approved a new website provider to further upgrade this important means of communication. It will give committee members more flexibility in making adjustments. The website will also incorporate a Pay Pal system to make membership, workshop and conference payments easier.

The 7th National Histology Conference in conjunction with the 9th Asia Pacific IAP Congress, was a great success from all aspects. Congratulations to the "Histotechnology Group of Queensland" who did a fantastic job in organising this conference. The special stains workshops had 95 participants, further indication that we need to focus in the workshop area. Combining with the IAP had a lot of positives. Providing a conference App proved very popular and enabled attendees at the scientific presentations to ask the speaker questions via their mobile phone or tablet, a great idea which worked well. The next National Histology Conference is to be held in Tasmania in 2017.

Looking at our future meetings, July we have a workshop on silver stains in Canberra which is being organised by Penny Whippy and Anne Prins. Recently we had 14 attendees registered with 10 spots left. If you are interested in attending you need to contact either of these ladies as soon as possible.

In September we have our "Annual General Meeting" at North Ryde RSL. Our speaker is from DHM and will give a presentation on "Obstruction Pathology". At the AGM we will be presenting some changes to the constitution for approval. It will be a good night.

In October a "Microtomy" workshop is planned at Granville TAFE. This workshop will cover issues relating to microtomy with practical components.

November we have a "Macro PATH" workshop planned. This system enables digital images to be taken of gross specimens and cut up. We will also be looking at digital imaging using mobile phones and digital imaging generally. Digital imaging is a rapidly growing area in Pathology and microscopy.

We are looking at something different for our Christmas function. More information in the near future.

Cheers,
Trevor Hinwood.
Chairperson.
Histotechnology Society of NSW.

Histogram Advertising Charges

A4 PAGE - Printed Copies Supplied By Advertiser	1 or 2 sides..... \$75.00
A4 B&W PAGE - Printed In The Journal	1 A4 page \$100.00
A4 COLOUR - Printed In The Journal	1 A4 page\$300.00

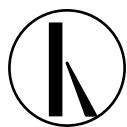
HISTOTECHNOLOGY SOCIETY OF NSW POSTAL ADDRESS

PO BOX 871
SEVEN HILLS, NSW 1730

UPCOMING EVENTS 2015

Pencil them in your diary

18th July <i>Workshop on Silver Stains</i>	Presenters: Time: Venue: Contact: Phone:	Anne Prins & Penny whippy 10am to 3pm Canberra Institute of technology anne.prins@anu.edu.au ; pwhippy@bigpond.net.au 02 6125 4644 0418787000
21st August AGM <i>Talk on Obstructive Pathology</i>	Presenters: Time: Venue: Contact: Phone:	Dr Esther Myint, Douglass Hanly Moir Pathology 6.30pm to 8.30pm North Ryde RSL bcheerala@dhm.com.au 02 9855 6271
23rd to 25th <i>September</i> <i>Workshop on Surgical cutup</i>	Presenters: Time: Venue: Contact: Phone:	 All spots taken/House Full
Date TBA October <i>Workshop on Demonstration & Issues Relating to Microtomy</i>	Presenters: Time: Venue: Contact: Phone:	Jessica Kelly, Leica Microsystems 11am to 3pm Granville TAFE bcheerala@dhm.com.au 02 9855 6271
7th November <i>Workshop on MacroPath (Digital Imaging System for the Grossing Room)</i>	Presenters: Time: Venue: Contact: Phone:	Claire Chupin, ABACUS ALS TBA Douglass Hanly Moir Pathology bcheerala@dhm.com.au 02 9855 6271
Date TBA November or Early December <i>Christmas Talk & Function</i>	Presenters: Time: Venue: Contact: Phone:	TBA TBA TBA bcheerala@dhm.com.au 02 9855 6271



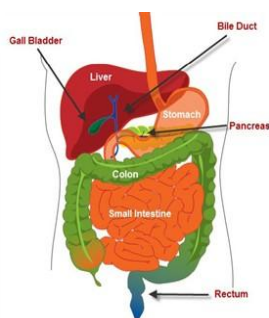
HISTOTECHNOLOGY SOCIETY OF NSW

ANNUAL GENERAL MEETING (AGM)

4th SEPTEMBER FRIDAY 2015 AT 6.30PM

Guest Speaker:

Dr Esther Myint, Douglass Hanly Moir Pathology presenting



Obstructive Pathology

The saying of "Go with the flow" is so true; things get on working and life plods along.

BUT if the flow is blocked – life turns into a nightmare.

Most organs; including brain, salivary glands, lungs, heart, gastrointestinal tract, genitourinary tract will breakdown if there is obstruction.

The lecture is about the pathology of the organs due to blockage in the system.

WHERE: *North Ryde RSL, 27/41 Magdala Rd
Cnr of Pittwater and Magdala Rds, North Ryde
Finger food provided at the conclusion of the meeting.*

RSVP: *21st August 2015*

Contact: *Bharathi Cheerala, Douglass Hanly Moir Pathology*

Ph: 02 9855 6271

Email: bcheerala@dhm.com.au



Surgical Cut Up Workshops 2016

At the current moment we are about half subscribed for 2016. If applicants on the 2016 waiting list or expressed an interest in the course are unable to attend we will offer those positions to new applicants – on a first-in basis. We will hold the first session in **early-mid April** for the first workshop and finishing with **late September**. Dates will be confirmed as soon as the CIT teaching calendar becomes available in the New Year.

The cost for **each of the 4** workshops will be \$110 to cover equipment, tissue, etc. The fee for the whole course will be \$400 if paid prior to the session. , we are going to run them over three consecutive days (Wednesday to Friday), still to be held at the CIT in Bruce, ACT. This will mean one trip to Canberra – it will make the Workshops more feasible for interstate attendees. The session will commence at 9 am and running til 5 pm, with morning tea, lunch & afternoon tea provided.

Please let us know if you have any particular dietary requirements.

The workshops are structured to follow the NPAAC guidelines, the first part of the workshop will cover direct transfers, the descriptions required etc. The second will cover simple skins, gallbladders, appendices etc, their descriptions etc. The third will cover complex skins that require inking and detailed diagrams and orientation as well as slightly more complex organs like uterus, the descriptions etc. The fourth will cover even more complex skins, and large organs such as colons, breasts, prostates, the descriptions etc.

Attendees will receive a comprehensive guide to Cut Up covering all the above areas, with lists of descriptive words that will come in useful, diagrams, and techniques necessary.

At the workshops the attendees will work in pairs to cut up/scribe the tissue, so that each will have performed both tasks on each type of tissue. The macroscopic description will be taken back by the attendees to transcribe into the **format** used at their own laboratory (where this doesn't impinge on corporate knowledge) on plain paper – not report or letterhead paper! These must be returned satisfactorily with 8 weeks of the workshop.

Tissue cut up at each workshop will be processed and embedded here, and checked against the macroscopic description the attendees will submit (electronically or otherwise). These descriptions etc will be assessed and compiled into a folio to complete that area of the NPAAC requirements.

Upon the successful completion of these requirements, the attendees will be presented with a Certificate of Competence in Anatomical Cut Up.

Attendees need not have formal qualifications, the experience of assisting at cut up is sufficient for the purpose.

We conduct this course twice annually, so there is always next year for those staff who can't make it now.

Many thanks,

Penny & Anne

pwhippy@bigpond.net.au and anne.prins@anu.edu.au



HISTOTECHNOLOGY SOCIETY of NSW, CANBERRA BRANCH

Application-Invoice for Attendance at Surgical Cut Up Workshop 2016

Course Dates (circle): early-mid April late September Location: Room D129 CIT Bruce, ACT

All coursework must be completed over these dates unless otherwise arranged

Name:

Contact Details:

Postal Address: Mob or phone:
..... Email:
.....

Qualifications/Experience (very brief):

Attendees need not have formal qualifications, 18 months or more experience of assisting at cut up is sufficient for the purpose.

.....
.....

Special Dietary Requirements:

Payment Arrangements (GST included):

Prepayment a fortnight prior to attendance – total of \$400 ☐
Payment at attendance – total of \$440 ☐

Cheque (Made out to Histotechnology Society of NSW, Canberra Branch) ☐

Direct Debit (CBA Mawson ACT Acc No 1011-1582 BSB 062-922) ☐

Cash: ☐

Accommodation:

Please contact Canberra Tourist Bureau - www.visitcanberra.com.au.

Belconnen Premier Inn is the closest (3.3km), with Canberra Motor Village (4.2km) and Belconnen Way Hotel (6.4km). There is no accommodation within walking distance.

Addition Issues:

Please inform us of any session that cannot be attended over the course of the three days. We will endeavour to accommodate all problems as they arise e.g. illness, through additional "private" sessions – this requires significant planning.

.....
.....

Please return ASAP to either:

Anne Prins 02 6125 4644 anne.prins@anu.edu.au
Penny Whippy 0418 787 000 pwhippy@bigpond.net.au

Penny Whippy
President/ Secretary

Anne Prins
Treasurer
15/07/2015

Body Farm Talk

Momoko Sakaki, The Children's Hospital at Westmead

Pictures by Jacky Mayfield, The Children's Hospital at Westmead

On Thursday 19th March 2015, Dr Kendall Bailey, Forensic Pathologist at the Institute of Forensic Medicine, Glebe, gave an intriguing talk on Forensic Pathology in general and the "Body Farm" in particular.

The "Body Farm" is the colloquial name given to research facilities which investigate patterns of decomposition of human remains. The first of these "body farms" was the Forensic Anthropology Centre located in Knoxville, Tennessee. It is one of five such facilities in the United States and the place where Dr Bailey did her research on macrocosms made by clothing on the body.

Through the increasingly gruesome yet incredible photos taken by Dr Bailey, attendees were taken into the world of the "Body Farm". We were able to see the layout of the facility (right next to the hospital!), the different types of research being conducted on deceased bodies and maggots – lots and lots of maggots. If people got only one thing out of the presentation, it would have been, "Maggots love holes!"

The talk was fascinating, not just due to the topic matter but because of Dr Bailey's engaging and entertaining personality and the passion for her work which exuded throughout the presentation. It was an excellent turn out and from the feedback received; all the attendees thoroughly enjoyed the talk.

Thank you to Dr Kendall Bailey and to all the committee members who worked hard to make the evening a success.

Also a big thank you to Leica Biosystems for sponsoring the talk and providing the attendees with delicious post- talk nibbles. As most attendees come straight from work, food really helps make these talks a success. Company sponsorship for educational talks and workshops is invaluable so thank you again to Leica Biosystems for the sponsorship and for the continued support of the Histotechnology Society of NSW.



Summary of the 7th National Histotechnology Conference

Jacky Mayfield , The Children's Hospital at Westmead

Over the June long weekend, The Histotechnology Group of Queensland hosted The 7th National Histotechnology Conference. It was the first to be held in conjunction with the 9th Asia Pacific International Academy of Pathology Congress. There were two separate conference programs with over 1500 pathologists, registrars and scientists anticipated to attend. It was held at the Brisbane Convention and Exhibition Centre in the picturesque South Bank.



The weekend started with two workshops, Interactive Digital Pathology and Histochemical Staining with the Experts, held on the Friday at the Queensland University of Technology. Both were a great success with over 95 participants in the wet workshop alone. The two day conference program was both informative and interesting, with talks covering various areas of Histopathology from Digital Pathology to Australia's first Forensic Toponymy facility. The HGQ also unveiled their new conference app which gave delegates the ability to view program times, speaker information and the all-important social program. The app also gave the shyer delegates the opportunity of asking questions of the guest speakers without having to put their hands up.





'Trade Alley' was also a great opportunity for various companies to showcase their products to not only the histotechnologist's, but also the pathologists and registrars attending the IAP Congress.

Then there was the Masquerade Ball. It was a great chance to mingle with fellow histotechnologist's from various institutions. It was an amazing night filled with great food and amazing company. The photo booth was also a great addition to the night with the photos speaking for themselves, depending whether your photo was taken at the beginning or at the end of the night!



I would also like to take this opportunity to thank and congratulate The Histotechnology Group of Queensland for hosting this year's National Histotechnology Conference. It was a great weekend! The venue was fantastic, the speakers were informative and entertaining and most importantly, there was a plentiful amount of delicious food.

Thank you to all those involved in making the 7th National Histotechnology Conference such a success.



Answers from Issue 1, 2015

1. What is the tissue?
- Liver
2. What do you think the pigment is?
- Formalin Pigment
3. How would you remove it?
- Garvey's Acidified/Phenol/Ethanol or Alcoholic Picric Acid

Abstracts from the 7th National Histology Conference 2015

Eric F. Glassy, MD,FCAP - Digital Pathology Workshop

M.D. is Board certified in Anatomic and Clinical Pathology with a specific interest in Hematopathology, Information Technology and Digital Pathology

The Hitchhiker's guide to the Galaxy, a cult favourite of the 80s, recounts the destruction of earth, an alien researcher's eponymous digital guidebook for galactic travel, and the search for the ultimate answer to life, the universe, and Everything.

This talk follows a similar path-- the destruction of analog pathology, the search for a killer digital pathology app, and finally the discovery of the real answer to everything (digital).

Using a Digital Pathology Guidebook, Dr. Glassy, using his experience in roughing it around the whole slide imaging galaxy, will guide the listeners on a grand tour of our digital world. We will stop off at some familiar signposts along the way: education, tumor conferences, QR codes, consultations and multiplex analyses but then explore the promise of DP and how it can be integrated into current and future workflows. We'll even throw in a little sex, drugs, and rock and roll.

So, all you digital pathology tourists, stick out your thumb drives and hitch a ride. Discover the question to the ultimate answer. The objectives are not the objective. There's more to life than stains, glass, and compound lenses.

Dr Blake O'Brien - Cutaneous marginal zone lymphoma, and the 'grey zone' between benign and malignant

Consultant dermatopathologist based at Sullivan Nicolaides Pathology's Indooroopilly laboratory

This lecture will address cutaneous lymphoma, in particular marginal zone lymphoma. The current diagnostic modalities and criteria will be discussed, along with case presentations. Of particular focus, will be the challenge (in some patients) of distinguishing between benign and malignant cutaneous B-cell lymphoid proliferations.

Hayes DA, Pyecroft SB, Snow ET - Determining The Immunophenotype Of Devil Facial Tumour Disease (Dfnd) - New Marker Insights

Background: The Devil Facial Tumour (DFT) is a transmissible subcutaneous soft tissue malignancy of possible Schwann cell origin, primarily affecting the facial regions of the Tasmanian devil (*Sarcophilus harrisii*). As a consequence, wild populations of the Tasmanian devil have been significantly reduced, leading to the realisation that extinction of this iconic species must be considered a real possibility.

Aim: To evaluate both primary and metastatic lesions of the five different cytogenetically identifiable strains of DFT using immunohistochemical markers to determine cell lineage and

identify cell specific receptors, growth and transcription factors, extracellular matrix and cell signalling, to determine tumourigenesis and functionality.

Method: We use morphological characteristics, immunohistochemistry and analytical algorithms to determine the immunophenotype of clonal forms of DFT.

Results: A comprehensive immunophenotype of >60 primary antibodies has classified and differentiated DFT from other soft tissue malignancies revealing functionality and tumourigenesis. Implications for the effectiveness of vaccine or treatment protocols across DFT clones and possible identification of pre-clinical markers can now be established with disease eradication our primary goal.

Penny Whippy - The Friday Dilemma – Overfixation

Prof Assoc and lectures at UC and CIT in Anatomical Pathology

Specimens collected on Fridays are routinely processed over the weekend in most Histology Laboratories. This has not been an issue for Histochemistry as H&E and Special Stains are not particularly sensitive to the additional 48 hours of fixation the tissue receives with weekend processing. However, there is increasing diagnostic, prognostic, and medico-legal importance placed on accurate IHC and ISH results. IHC epitopes are very susceptible to overfixation and even 48 hours of additional exposure to formalin results in increased crosslinking which will affect the availability of antigenic sites, ISH binding sites are slightly more robust but there is still an affect!

Additional epitope retrieval can correct this, but in a routine lab how do you distinguish which blocks have been exposed to prolonged fixation? It would make more practical sense to remove **that** 48 hours from the equation.

The research community regularly fix specimens in formalin for 24 hours and then they are held in Phosphate Buffered Saline (PBS) for weeks or months until batches are ready for processing. I decided to investigate the incorporation of PBS into the processing schedule in parallel with routine overnight and weekend processing. This was done by using formalin in the first station for 5 hours to ensure adequate fixation (we all know some Friday specimens are cut-up a little too fresh!), then PBS in the second station for 48 hours as a holding solution, followed by routine dehydration, clearing, and wax impregnation. A variety of routine, special stains, and IHC were then performed on the parallel tissues.

Can such a simple change really solve the Friday Dilemma?

Shari Forbes - Developing the first Australian Forensic Taphonomy Facility

Shari Forbes is a Professor and ARC Future Fellow in the Centre for Forensic Science at the University Of Technology Sydney (UTS)

Forensic taphonomy involves the study of human remains from the time of death to the time of discovery. This field of investigation is studied by forensic scientists to understand the physical, chemical, and biological processes of human decomposition. In a forensic context, a greater understanding of this process can assist police and forensic investigators to search for,

locate, recover, and identify victim remains. Such research is particularly important for investigations involving missing persons, victims of homicide, and victims of mass disaster. The process of decomposition is inherently impacted by the surrounding environment, including climatic conditions, geological formation and the ecological community. At present, the only facilities that conduct human decomposition research are based in the USA however their data cannot be extrapolated to Australia due to our distinctly different environment. This presentation will discuss the development of Australia's first forensic taphonomy facility that will utilise donated cadavers to study the process of decomposition in our local environment. The facility involves collaboration between universities, police agencies, and forensic science services in Australia and encompasses a range of disciplines including chemistry, molecular biology, pathology, toxicology, anatomy, entomology, anthropology, archaeology and palaeontology. The facility is being developed as a national research and training site and will revolutionise the way in which death investigations are conducted in Australia.

Mr Alex Laslowski - Patient Safety in the Histopathology

Patient safety is a topic which is gaining more and more momentum in the health environment both locally and overseas. It encompasses more than the day to day quality control and quality assurance to which we are required to maintain for accreditation purposes. Patient safety in the histology laboratory involves looking at the journey of the patient sample through the various areas of the laboratory and how the staff process the various tasks involved in obtaining a section. It involves trying to minimise or eliminate errors to ensure that the patient is always receiving the correct diagnosis. Diagnostic errors still occur in laboratories and the cost on the patient and the litigation payouts are increasing every year. When considering errors we need to keep an open mind and look for ways to reduce or eliminate the incidence which may include addressing faults in our systems. This presentation is aimed at raising the awareness of patient safety and some of the potential errors which can occur within the histology laboratory.

Kellie Vukovic - Complex Surgical Pathology Cut Up: A Scientist's Perspective Grade I Scientist at Peter MacCallum Cancer Centre, Melbourne, Victoria

The Anatomical Pathology department at Peter Mac commenced a complex surgical cut up training program in 2014 targeted at scientists with at least 2 years of non-complex surgical cut-up experience. This change came about as three fifth-year registrars completed their studies and were replaced with a 1st year registrar, as a result of funding cuts and in response to modifications introduced to the NPAAC guidelines. Prior to this, scientists were undertaking a range of specimens from direct transfers to orientated skins.

Utilising the expertise of an accredited Pathologists' Assistant (PA), two Scientists were selected to begin an on-the-job training program in complex surgical cut-up. Training included sponsored study, supervised gross dissection and the completion of a specimen log. Scientists proved capable in the dissection of complex specimens under the guidance of a Pathologists' Assistant and Pathologists were satisfied with the macroscopic reports and blocks selected.

This presentation will outline positive and challenging aspects of this training program from the perspective of a training Scientist, with a lack of fundamental anatomy knowledge being a potential pitfall for participation in this initiative.

Kerri Fisher - Tails from a Veterinary laboratory

Technical officer in charge of Histology - State Diagnostic Veterinary Laboratory in 1996.

The animal kingdom, with its vast diversity, so weird and wonderful, can set many a challenge for the Veterinary histology technician.

The NSW Department of Primary Industries, State Veterinary Diagnostic Laboratory (SVDL) is located at the Elizabeth Macarthur Agricultural Institute at Menangle NSW. It operates under the NSW Biosecurity Policy and a part of the recently merged divisions of Biosecurity and Food Authority. The SVDL is NATA accredited (ISO 17025) and currently the only government laboratory operating in NSW, servicing over 30,000 clients and performing over 270,000 tests per year in histology, serology, bacteriology, parasitology and genetics.

The lab receives a broad range of samples from production animals, companion animals, aquatics, wildlife and bees and performs tests to support disease surveillance, monitoring, diagnosis, export accreditation and research. Our work supports the State's biosecurity measures with the aim of safeguarding the \$12 billion primary industries sector and conserving our environment. In simple words, we protect our food chain and support trade.

With submissions received from both government employed and private veterinarians from across NSW and interstate, there are many challenges in ensuring that samples arrive safely, with diagnostic integrity and that our protocols can support the vast array of disease entities and affected species. These include; **Squishy Brains** from sheep and cattle to support the Transmissible Spongiform Encephalopathy (TSE) exclusion programs where autolysis can rapidly affect the processing of brain stem; **Gritty Intestines** from ruminants for the market assurance Johne's Disease program (*Mycobacterium paratuberculosis*); and a broad diversity of **aquatic species** where exotic disease exclusion in Pacific oysters, health monitoring of Sydney rock oysters and mass mortality in fish, crabs, eels or stingray can cause significant processing challenges. With a 24 hour turnaround time for H&E sections we can provide rapid diagnostic feedback to disease events.

With a team of 10 pathologists, 2 of which are registered specialists, we have a strong diagnostic team and a steady flow of comparative pathology cases including earthworm nerve regeneration, ovotestis examination of snails, bees and prawn tails. We can utilise global expertise with the recent introduction of a digital slide scanner which provides batch scanning of up to 250 slides and magnification to 120x with z-stacking capabilities. We operate regular diagnostic rounds using both a multi-headed microscope and conferencing through the digital slide scanner.

My presentation will showcase the spectrum of cases received, outline the specific processing challenges that we face and provide an overview of some of the solutions we have found to overcome the challenges of histology processing in the diverse world of Veterinary Pathology.

Michelle McNiven - The regulation of In vitro diagnostic medical devices (IVDs) – An Update on the Transition and Proposed Reforms

Currently the manager of the IVD Transition Project within the Devices Authorisation Branch, Therapeutic Goods Administration (TGA).

In vitro diagnostic medical devices (IVDs) are tests and related instrumentation used to carry out testing on human samples. The results of these tests are intended to assist in clinical diagnosis and management. IVDs are typically used in diagnostic laboratories, other laboratories (blood and tissue screening laboratories), at the point of care, and in some cases in the home.

A new regulatory framework for IVDs was introduced in 2010 with a four year transition period that was initially to end on 30 June 2014. During the transition period a number of outstanding issues were identified in relation to the regulation of IVDs, particularly in relation to difficulties some members of the sector were experiencing in achieving timely compliance with the new requirements.

In response to some of these concerns the Therapeutic Goods Administration (TGA) released a consultation paper proposing some amendments to the regulations and invited comment from stakeholders to assist the TGA with consideration of these issues. As a result of the consultation process the transition period has been extended and some limited and specific reforms have been proposed, particularly in relation to in-house IVDs.

This presentation will provide an update on the status of the transition of IVDs to the IVD regulatory framework and the proposed reforms.

*Come to our Silver Stains
Wet Workshop
Saturday 18 July 2015*

- ❑ *Manually performed stains on provided slides*
- ❑ *Troubleshooting problems - bring them with you!*
- ❑ *Runs from 10:00am to 3:00pm*
- ❑ *Lunch provided from Pide House (Halal)*
- ❑ *Covers the big 3 Beilchowski brothers :*
 - *Groccott*
 - *PASM*
 - *Reticulin*
- ❑ *Comprehensive workbook provided*
- ❑ *Suitable for all staff*
- ❑ *Apac points for continuing education requirements under NATA*
- ❑ *Held at Canberra Institute of Technology and run by Anne Prins and Penny Whippy*
- ❑ *Maximum intake 24 only so be quick!*
- ❑ *Cost: \$60*

Contact: Anne Prins

02 6125 4644 anne.prins@anu.edu.au

Penny Whippy

0418 787 000 pwhippy@bigpond.net.au



HISTOTECHNOLOGY SOCIETY of NSW, CANBERRA BRANCH

Application-Invoice for Attendance at Silver Stains Workshop 2015

Course Date: Saturday 18 July, 2015 Location: Room D129 CIT Bruce, ACT

Name:

Contact Details:

Postal Address:
.....
.....
.....

Mob or phone:
Email:

Special Dietary Requirements

.....

Payment Arrangements (GST included):

Prepayment a fortnight prior to attendance – total of \$60 ☐

Payment at attendance – total of \$60 ☐

Cheque (Made out to Histotechnology Society of NSW, Canberra Branch) ☐

Direct Debit (CBA Mawson ACT Acc No 1011-1582 BSB 062-922) ☐

Cash: ☐

Accommodation, if required:

Please contact Canberra Tourist Bureau - www.visitcanberra.com.au.
Belconnen Premier Inn is the closest (3.3km), with Canberra Motor Village (4.2km) and Belconnen Way Hotel (6.4km). There is no accommodation within walking distance.

Addition Issues:

Please inform us of any additional issues that we may need to be aware of.

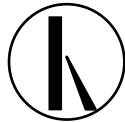
.....
.....
.....

Please return ASAP to either:

Anne Prins 02 6125 4644 anne.prins@anu.edu.au
Penny Whippy 0418 787 000 pwbhippy@bigpond.net.au

Penny Whippy
President/ Secretary

Anne Prins
Treasurer
4/06/2015



HISTOTECHNOLOGY SOCIETY of NSW

(ABN 63 128 868 343)

MEMBERSHIP RENEWAL NOTICE 2015-2016

Dear member,

Your Membership of the Histotechnology Society of NSW is now due for the year ending 30 June, 2015. If you have not received any notices from us in the last year, it may be that you have not renewed your membership for year ending 2014.

For your convenience we have included details for internet banking. Please remember to enter your name on the internet form so we know who has paid, also complete and return your membership form for our records whether you renew online or by mail.

If you have email access, please fill in your email address **legibly**. If you do not have access to email we will continue to mail material to you. If you have given us your email address, you will be able to access the member section of our website www.histonsw.org.au

The Committee hopes that you have enjoyed the benefits of your membership in the past and looks forward to your support and to seeing you at our meetings again in the future.

Remember that membership and participation in a professional group is a NATA requirement.

Please find enclosed a renewal form which we hope you will return to us promptly.

Note: *If you already renewed your membership please disregard this letter.*

Bharathi Cheerale
(Hon. Secretary)
1 June 2015

P.O. Box 871
Seven Hills
NSW 1730



Appendix 1

HISTOTECHNOLOGY SOCIETY of NSW

ABN: 63 128 868 343

www.histonsw.org.au

Incorporated under the Associations Incorporation Act 2009

Student Membership Application Form 2015 – 2016

PLEASE TICK: ☐ New Member ☐ Renewal of Membership ☐ Change of Details

SURNAME _____ GIVEN NAME _____

POSITION _____ INSTITUTION _____

ADDRESS for CORRESPONDENCE: HOME OR BUSINESS? (Circle One).

STREET/P.O.BOX. _____

SUBURB _____ POSTCODE. _____

PHONE: WORK _____ HOME _____

E-MAIL ADDRESS: _____

I wish to become a member of the Histotechnology Society of N.S.W. Inc. and enclose

☐ **Free annual subscription for 2015-2016. Copy of Student ID required***

Please make cheques payable to the Histotechnology Society of NSW
Or: **Internet Banking: BSB:802 084; Account number: 94099;**

Account name: **Histotechnology Society of NSW.** Reference: **[Name – for member identification]**

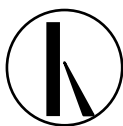
I agree to be bound by the constitution of the Association for the time being in force.

SIGNATURE _____ **DATE** _____

Proposer: _____ Signature: _____ Date: _____

Seconder: _____ Signature: _____ Date: _____

Return to: Secretary, Histotechnology Society of NSW, PO Box 871, Seven Hills 1730, NSW



Appendix 1

HISTOTECHNOLOGY SOCIETY of NSW

ABN: 63 128 868 343

www.histonsw.org.au

Incorporated under the Associations Incorporation Act 2009

Membership Application Form 2015 - 2016

PLEASE TICK: ☐ New Member ☐ Renewal of Membership ☐ Change of Details

SURNAME _____ GIVEN NAME _____

POSITION _____ INSTITUTION _____

ADDRESS for CORRESPONDENCE: HOME OR BUSINESS? (Circle One).

STREET/P.O.BOX. _____

SUBURB _____ POSTCODE. _____

PHONE: WORK _____ HOME _____

E-MAIL ADDRESS: _____

I wish to become a member of the Histotechnology Society of N.S.W. Inc. and enclose

☐ \$38.50 for annual subscription of \$35.00 and \$3.50 GST.

Please make cheques payable to the Histotechnology Society of NSW

Or: **Internet Banking:** BSB: **802 084**; Account number: **94099**;

Account name: **Histotechnology Society of NSW**. Reference: **[Name – for member identification]**

I agree to be bound by the constitution of the Association for the time being in force.

SIGNATURE _____ **DATE** _____

Proposer: _____ Signature: _____ Date: _____

Second: _____ Signature: _____ Date: _____

Return to: Secretary, Histotechnology Society of NSW, PO Box 871, Seven Hills 1730, NSW



Conference 30th September –
2nd October 2016



HISTOTECHNOLOGY SOCIETY OF NSW



Histotechnology Group of
Queensland



To all our Colleagues and Friends
On behalf of the organising committee it is with pleasure we invite you to attend
Histotechnology Group of Queensland & The Histotechnology Society of NSW

JOINT HISTOTECHNOLOGY CONFERENCE

30th SEPTEMBER – 2nd OCTOBER, 2016
(Labour Day - Weekend)

Our choice of Port Macquarie enables delegates,
through their attendance & professional participation
on-going development with our commitment for a rewarding experience,
while your family can enjoy all the attractions offering in this beautiful area.

We propose a broad range of topics and updates that will hold strong appeal.
Enter the date in your device now! We look forward to you joining us – further details later.

Anthony van Zwieten
Histotechnology Group of Queensland

Trevor Hinwood
Histotechnology Society of NSW Inc.



Histotechnology Group of
Queensland



HISTOTECHNOLOGY SOCIETY OF NSW



PANTHERS
PORT MACQUARIE

Arrive at destination **Port Macquarie**, New South Wales and you will find a coastal township showcasing the beauty of pristine beaches set alongside stunning national parks. Offering a distinctive mix of heritage buildings, modern hotels and apartments, an array of attractions and a township offering diverse dining experiences, cafes and shopping, state of the art entertainment venues, Port Macquarie has so much to offer.

Located halfway between the Gold Coast, Qld and Sydney, NSW on the New South Wales coast at the mouth of the Hastings River, the weather in Port Macquarie is beautiful all year round and temperatures range from 20c to 32c in summer and from 8c to 21c in winter.

The Club, Port Macquarie Panthers is a community focused social club with a proud history stretching over 65 years. Employing over 120 local people who represent the heartbeat of our community - passionately striving to deliver the best in customer care through our entertainment, events, promotions, sports and leisure activities. The Club itself is the home of the Port Macquarie Panthers RSL Sub-Branch and currently has over 17,500 Members, and together with our Bay St Brasserie & Cafe, 3 bars, gaming facilities and 350 car parking spaces offers easy accessibility for all.



PORT MACQUARIE PANTHERS is the perfect venue for our joint Conference. Overlooking the beautiful Hastings River, Panthers offers flexible and versatile spaces, including an Auditorium, outdoor decking, gardens and ample free parking. You will be pleasantly surprised with the range of tantalising fresh food options on offer. Teamed with professional and friendly service of staff, we can assure you that this event will be one not to be missed.

The Club boasts the largest and most amenable conference and concert venue in Port Macquarie and attracts both International and Australian touring artists. The Auditorium can accommodate people theatre style or banquet style, complete with stage, dance floor, podium with PA System.

Additional conference rooms are in close proximity to the Auditorium and accessible by stairs and elevator.



LOOK FORWARD TO SEEING YOU
OCTOBER 2016

